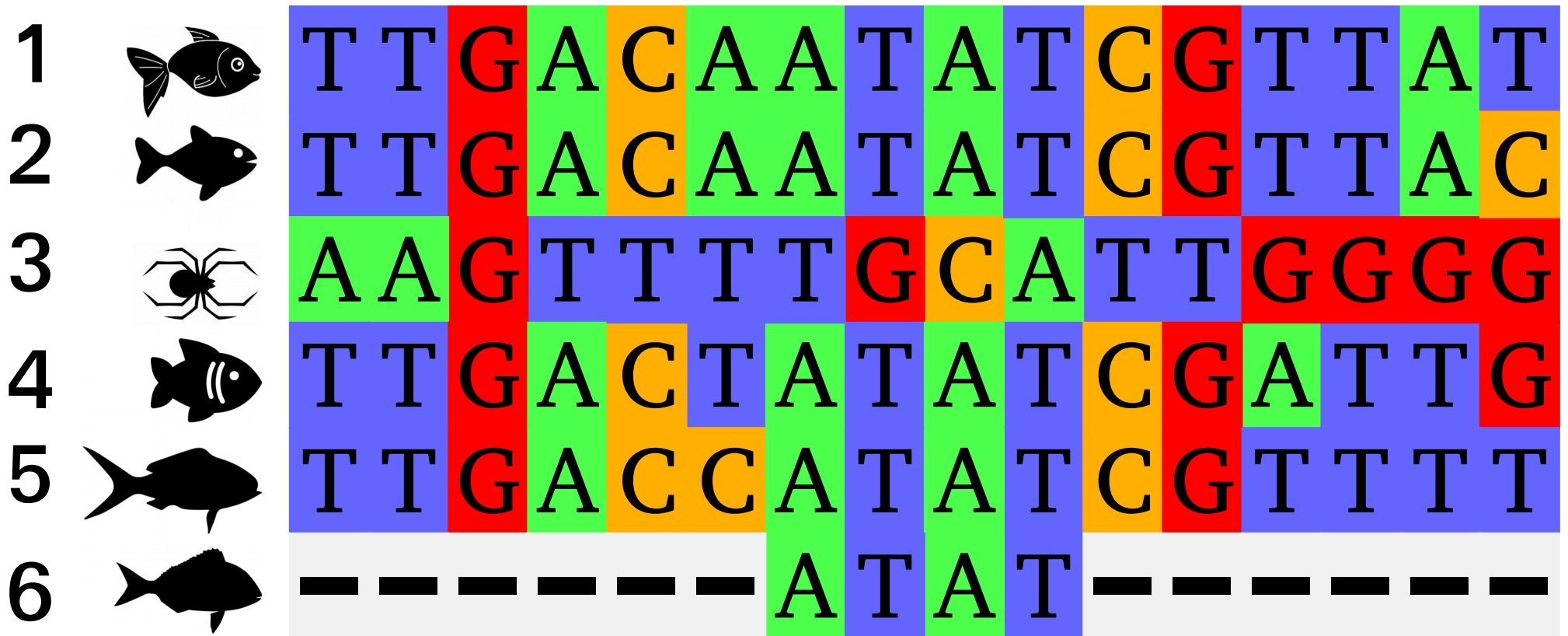


Introduction to Bioinformatics for Computer Scientists

Exercices 11

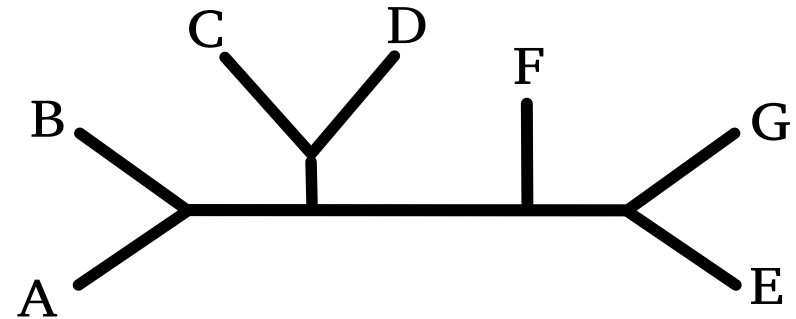
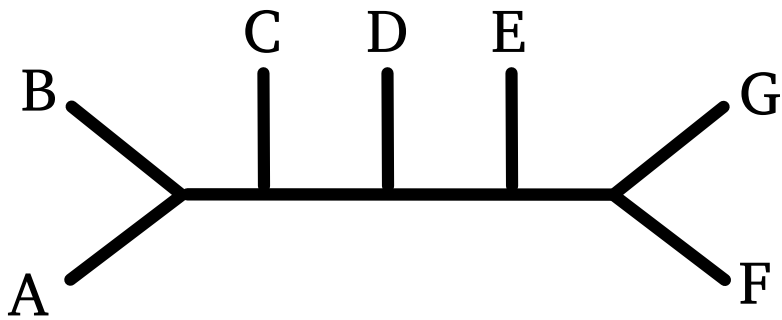
Rogue taxa

- Identify the two rogue taxa
- Explain why they are rogue taxa



Tree distances

Compute the (absolute non-weighted) RF-distance and the SPR distance between the two following trees:



Consensus trees

Given the four following trees:

- compute their strict consensus tree
- compute their majority-rule consensus tree ($t=60\%$)
- and compute their support values

